

PACTBILL

PORT ARANSAS COMMUNITY THEATRE



THE PLAY THAT GOES WRONG



February 1 – 25, 2024



PLUMBING, REPAIR,
SUPPLY, AND
BACKFLOW TESTING

216 WEST AVE A
PORT ARANSAS, TEXAS
(361) 749-4274



FEBRUARY 1 - 25, 2024

PORT ARANSAS COMMUNITY THEATRE
presents

THE PLAY THAT GOES WRONG

By Henry Lewis, Jonathan Sayer and Henry Shields

Directed by Ken Yarbrough

SHOW SPONSOR: SANDOLLAR SERVICES

THE PLAY THAT GOES WRONG was first presented by Mischief Theatre under the title The Murder Before Christmas on December 4th, 2012, at the Old Red Lion Theatre in London. THE PLAY THAT GOES WRONG by Henry Lewis, Jonathan Sayer & Henry Shields © 2012, 2014 Mischief Worldwide Ltd. All rights reserved. THE PLAY THAT GOES WRONG, the "Falling G" logo device, Mischief, and Mischief Theatre are trademarks of Mischief Worldwide Ltd. All rights reserved. This production is presented by arrangement with Dramatists Play Service under license from Mischief Worldwide Ltd.

PORT ARANSAS COMMUNITY THEATRE
2327 State Highway 361, Port Aransas, TX
(361) 749-6036 • portaransascommunitytheatre.com

Fire It! Ceramics

611 S. Alister St. • Port Aransas, TX • (361) 749-7967 • fireitceramics.com

FINE CUISINE PREPARED ON-SITE

At your home, vacation rental, or business.

Let our "Personal Chef" do the cooking!

Cooking Classes Available

361.402.5507

5th Flavor
5thFlavor.com



jackfish

port aransas

(361) 339-1089

3411 S. ELEVENTH ST. PORT ARANSAS, TX 78272



DISTRIBUTORS

Thank You

From the PACT Board of Directors

On behalf of the PACT Board of Directors, I want to thank you for being at our production and supporting regional live theatre. I'd like to thank my fellow volunteer board members for their dedication and efforts throughout this season. I'd be remiss not to recognize a couple of other people who make us so successful – Annette Berksan, who brilliantly handles our social media and continues to help build our brand, Alex Berksan, who has become our in-house photographer – and the dozens of others who help with concessions, tickets and so much more. PACT couldn't continue this tradition of excellence without their dedication. I deeply appreciate each and every one of them. Overseeing this monumental effort on a day-to-day basis is our theatre manager, Su-z Kleinhans, who takes care of too many things to mention. As a retired educator, there's no better place for her to be than around a bunch of folks who like to act like kids.

We are nervous to bring you *The Play That Goes Wrong*. Watching rehearsals, I have never seen so many things go wrong in such a short span of time. With that said, I have never laughed so hard because that is the brilliance of this riotously funny comedy and its talented cast, and oh yeah ... it's part of the show!

Don't forget to check out our 2024 season and other upcoming events as we continue to secure and produce some of the best live shows and concerts in the Coastal Bend. If you like what you see, tell everyone and please come back for *Steel Magnolias*, *Escape To Margaritaville* and *The Addams Family*.

Rick Adams, President, PACT Board of Directors





ON STAGE IN THE COASTAL BEND

The Coastal Bend is home to several wonderful theatres. Book your seats today.



Aransas Repertory Theatre
99 N. Austin, St., Rockport, TX
(361) 423-0152
aransas-rep.com

AURORA ARTS THEATRE



Aurora Arts Theatre
5635 Everhart Rd
Corpus Christi, TX
(361) 851-9700
auroraartstheatre.com



**Harbor Playhouse
Community Theatre**
1802 North Chaparral
Corpus Christi, TX
(361) 888-SHOW (7469)
harborplayhouse.com



NARADA RADIO COMPANY

Narada Radio Company
Audio Dramas
Corpus Christi, TX
Download and listen:
naradaradio.libsyn.com



Rockport Little Theatre
99 N Austin St, Rockport, Texas
(361) 450-1465
rockportlittletheatre.com



TODD GROSECLOSE

4531 Ayers Street, Suite #108
Corpus Christi, TX
(361) 994-4816

Serving Corpus Christi, Flour Bluff,
North Padre Island and Port Aransas



SERVICE SALES INSTALLATION

EST. 1976

(800) 899-8116 • highlandac.com • TACLB29839E



PILLAR ENGINEERING

Windstorm, Civil and Structural Engineering

(361) 960-4515 • kyle@pillarengineers.com • pillarengineers.com

RAINMAN IRRIGATION

\$\$\$ Interested in saving 1/3
off your water bill due to
your irrigation system? \$\$\$

Call (361) 717-4261

Landscape Lighting Installation
Lawn Sprinkler Installation & Repair

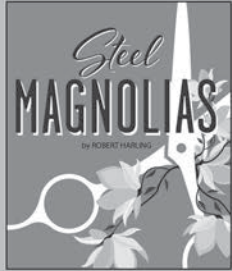
Lic. #13051

Up Next

TICKETS



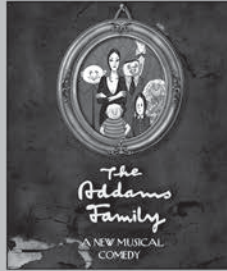
2024 SEASON SHOWS



APRIL 11 - 28



JULY 13 - AUG. 4



OCT. 10 - 27

2024 CONCERTS



MARCH 2



MARCH 9



MARCH 16



JULY 12 & 13

PORT ARANSAS COMMUNITY THEATRE

The Mission of the Port Aransas Community Theatre is to entertain, inform and educate, thereby enriching the cultural life of the Texas Coastal Bend area. PACT shall provide area residents and visitors the opportunity to attend and participate in quality presentations of a cross-section of the finest theatrical works available. PACT shall provide education in the theatre arts to adults, young adults and children. In meeting these goals, PACT shall be mindful of the standards of its audiences and shall maintain fiscally sound management.

2024 BOARD OF DIRECTORS & STAFF

Rick Adams, President
 Glenda McCormick, Vice President
 Nicole Boyer, Treasurer
 Rhonie Stuart, Secretary

Tiffanie Arnold Ray Dillahunty Yvette Jimenez Lisa Shelton

Staff

Su-z Kleinhans, Theatre Manager

Non-Board Contributors

Annette Berksan: Social Media, Website, PACTBILL and Print Design
 Alex Berksan: Show Photography

SPECIAL THANKS

- IGA Family Center and Port A Pizzeria for displaying show banners.
- Port Aransas South Jetty, The Island Moon and the Port Aransas Tourism Bureau & Chamber of Commerce for promoting PACT shows.
- City of Port Aransas for the award of hotel occupancy tax funds for PACT's 2022, 2023 & 2024 seasons.
- River City Roofing, Zarsky Lumber and Art Shanklin Construction for donating to the PACT Drive-In.
- Jacob Williams, outgoing PACT Board Member.
- PACT would like to extend special thanks and appreciation to Farley Boat Works for allowing us to use some of their specialty saws in the construction of the set for *The Play That Goes Wrong*. We sincerely appreciate their cooperation with not only this production, but also for past productions. - From Ray Dillahunty and all of the PACT volunteers.



SET CREW

PACT would like to thank Set Designer, Ray Dillahunty, and the incredible set crew members who spent countless hours building the complicated set for this show.



Nancy Branson



D'dee Collard



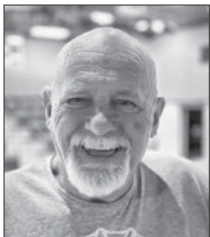
Ray Dillahunty



Joe Fowler



Kristy Frank



John (Dawg) House



George Hughes



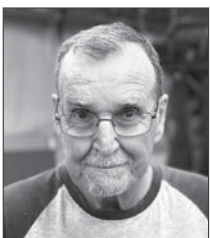
Brian Kralovec



John Krampitz



Henry Severson



Ed Tobia



Russ Trudell



Jim Wray



Vi Wysocki



Ann Zadra



Jeff Zadra

A NOTE FROM THE DIRECTOR



I have heard it said that “me falling from a tree is painful” but “you falling from a tree is comedy.” I believe that statement to be very true. I love to laugh. No. I *LOVE* to laugh! Laughter has been a light in the darkness for me through some of the most difficult moments of my life. Laughter has a way of breaking the silence and creating friends. Laughter has calmed my nerves and soothed my soul.

Comedy is harder to perform than drama. Comedy peels back the layers of the human condition and challenges our own comfort while laughing at the exposed nerves, thoughts and feelings. Comedy is subjective. For example, I love the dark humor of Monty Python, but some of my friends never get why I watch *The Holy Grail* over and over again while repeating the lines along with the film. Some people like the physical comedy of *The Three Stooges* while others prefer the subtleties of Carol Burnett. Comedy isn't supposed to be safe — and tonight's production will not disappoint. Comedy isn't pretty — and we have the cast to prove it!

So much care and safety has gone into this production, and I must take a moment to thank Stage Manager, Glenda McCormick, and her amazing tech staff. Each and every day they make certain that we are ready with the props and set pieces that we need. And without set designer, Ray Dillahunty, and his ragtag band of misfit set masters, this show would not have happened. Months have gone into making certain that the set before you is safe, that it is fireproof, earthquake resistant, flood secured, hurricane protected and tornado insulated. The only danger we could not protect this set from walks upright (in most cases) and has opposable thumbs (in most cases). And therein lies the comedy that is *The Play That Goes Wrong*. Ordinary people doing the best they can with what they have.

Enjoy the play, solve the murder and remember — it's only comedy when you fall from the tree!

Ken Yarbrough

EVACUATIONS: In the event of an evacuation, *DO NOT RUN*. Walk to the emergency exit nearest you. **NO SMOKING:** Smoking of any kind, including the use of E-cigarettes, is not permitted in any area of the theatre. Patrons who wish to smoke may do so outside the building. **REFRESHMENTS:** Outside food and beverages are not permitted inside the building during performances and events. **NO RECORDING DEVICES:** The use of any audio or video recording device or the taking of photographs, either with or without flash, is strictly prohibited. As a courtesy to others, please turn off all electronic devices, such as cell phones, and refrain from texting during the performance.

CAST

(in order of appearance)

Trevor JESSIE ALBERT
 Annie MORGAN MILLIGAN
 Chris NIC TREVINO
 Jonathan HUNTER HOLLOWAY
 Robert JORDAN BRUSTER
 Dennis RHONDA DOBIE
 Sandra SONNI NYE
 Max BRAYDEN JAKE

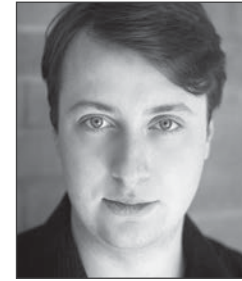
PRODUCTION TEAM

Director KEN YARBROUGH
 Stage Manager GLENDA MCCORMICK
 Light & Sound Director SAVANNAH STIRLING
 Technical Director RICK ADAMS
 Set Design RAY DILLAHUNTY
 Makeup Designer, Tech KIMBERLY MASSEY
 Stage Combat Choreographer GRACYN SCHOLZ
 Tech BRENDA CASTLE, EMILY REGIER, JUSTIN REVELS,
 MEAGHAN SETTERBO, AJ WARRINGTON
 Set Crew NANCY ARCHER BRANSON, D'DEE COLLARD,
 JOE FOWLER, KRISTY FRANK, JOHN (DAWG) HOUSE,
 GEORGE HUGHES, BRIAN KRALOVEC, JOHN KRAMPITZ,
 HENRY SEVERSON, ED TOBIA, RUSS TRUDELL,
 JIM WRAY, VI WYSOCKI, ANN ZADRA, JEFF ZADRA

CAST



Jessie Albert



Jordan Bruster



Rhonda Dobie



Hunter Holloway



Brayden Jake



Morgan Milligan



Sonni Nye



Nic Trevino

WHO'S WHO IN THE CAST

JESSIE ALBERT (*Trevor Watson*) is ecstatic to be performing once again at PACT. Acting at PACT has continued to create more friends and tons of memories for her. Jessie's fondest play is *Grumpy Old Men: The Musical*. She knows their mom will always have the best seat in the house, in heaven.

JORDAN BRUSTER (he/they/she) (*Robert Grove/Thomas Colley Moore*) is elated to return after two years for their thirteenth production at PACT, which is also Jordan's twelfth production collaborating with Ken Yarbrough. Jordan earned their BFA in Musical Theatre at Rockford University. Jordan holds amateur, educational and professional stage, film and TV credits in NYC, Illinois, Ohio, Iowa and Texas. Previous PACT credits include: *I Love You, You're Perfect, Now Change* (Man 1), *Little Shop of Horrors* (Seymour Krelborn), *I Am My Own Wife* (Director, Charlotte von Mahlsdorf/et al.), *The 39 Steps* (Director), *Love, Sex, and*

the I.R.S. (Leslie Arthur), *And Then There Were None* (Philip Lombard), *Bye Bye Birdie* (Conrad Birdie), *You're a Good Man, Charlie Brown* (Director, Snoopy), *Godspell* (Jesus) and *Shrek* (Donkey). Highlights of local credits: Harbor Playhouse — *High School Musical* (Director), *Fun Home* (Bruce Bechdel), *Avenue Q* (Nicky), *Little Shop of Horrors* (Seymour Krelborn), *Spamalot* (Featured Actor); Aurora Arts Theatre — *Noises Off* (Gary/Roger), *The Rocky Horror Show* (2022) (Dr. Frank-N-Furter); Del Mar College — *Noises Off* (Seldson/Burglar); Rialto Theater — *Heroes* (Director), *All is Calm* (2020) (Actor 7 "Tenor I"). Jordan sends a huge thank you to Ken and PACT for the warm welcome back to the Port A stage, the hard-working production team and crew, the talented, hilarious, and hard-working cast, Jordan's loving family friends and supporters, and their wonderful dedicated partner, AJ.

RHONDA DOBIE (*Dennis Tyde/Perkins*) is delighted to be returning to the PACT



Recycle Your PACTBILL

If you would like to keep the PACTBILL as a souvenir, please read and enjoy! If you are going to dispose of it, please recycle it in the gray baskets, which are located by the entrance doors.

WHO'S WHO IN THE CAST

stage. This is her second production at PACT. You may have seen her last year in *Drinking Habits* as Sister Augusta. She is thrilled to share the stage with such a talented cast, crew and production team — and she can't wait to share this special show with all of you.

HUNTER HOLLOWAY (*Jonathan Harris/Charles Haversham*) is very excited to perform this show as it is one of his favorites. This is his second play at PACT and twelfth play overall. He would like to thank his family and friends for their support. Enjoy the show!

BRAYDEN JAKE (*Max Bennett*) is so glad to be back at PACT! He has been in several productions around Texas (Amarillo, Dallas, Rockwall and Corpus Christi). You might remember him as the director of *I'll Be Back Before Midnight!*

in 2022. You might also recognize him from *The SpongeBob SquarePants Musical* (Old Man Jenkins) and *High School Musical* (Zeke Baylor) at Harbor Playhouse, and as an ensemble member in *RENT* at Aurora Arts Theatre. He is currently studying Media at Texas A&M-Corpus Christi. Go 'ders! He'd like to thank his mom (hi, mom!) and his friends for supporting him. @that_theatre_boii

MORGAN MILLIGAN (*Annie Twilloi*) has been performing on the PACT stage for more than 10 years. You may have seen her in *Shrek the Musical*, *Noises Off*, *Little Shop of Horrors* or *The Lightning Thief: The Perry Jackson Musical*. She also directed *5 Lesbians Eating a Quiche*. Morgan has had so much fun in this show. She'd like to thank her family for their endless patience and support. She enjoys watching



WHO'S WHO IN THE CAST

the show as much as she enjoys performing it. Thanks for coming out!

SONNI NYE (*Sandra Wilkinson/Florence Colleymoore*) is an actress and model born and raised right down the road in Corpus Christi, Texas, where she spent the majority of her childhood acting in school plays and competing in theatre tournaments across our state. To know Sonni is to know that she tends to have an arm and a leg in many things at once. She studied baking and pastry at Le Cordon Bleu in Austin, Texas, got her real estate license at the age of 21, co-founded an organization for young professionals and works for one of the top leading brokerages in real estate, eXp Realty. In April 2023 she graduated with an associate's degree from the American Academy of Dramatic Arts in New York City, where she studied the works of Meisner, Stanislavski and the Alexander Technique. Her most recent credits include an adaptation of the classic Greek tragedy, *Trojan Women*, and the new award winning play, *Emilia*. After almost ten years, Sonni has made her way back home to Corpus and is

beyond excited to be making her debut at PACT as Sandra/Florence Colleymoore in *The Play That Goes Wrong*.

NIC TREVINO (*Chris Bean/Inspector Carter*) is excited to be returning to the PACT stage after playing Grover in last summer's production of *The Lightning Thief: The Perry Jackson Musical*. He has been doing theatre since he was seven. The Inspector is a dream role for him and he's so excited to be able to do it with this talented cast. Some previous roles he has played are Edgar Allan Poe in *Maelstrom* and Sam in *The Flick*. He hopes you enjoy the chaos of this show! (No actors were harmed in the making of this production).



WHO'S WHO ON THE PRODUCTION TEAM



RICK ADAMS (*Technical Director*) is excited to be a small part of this hilarious comedy, which is directed by his good friend, Ken Yarbrough. Rick's on-stage credits include: *Grumpy Old Men: The Musical*, *Little Shop of Horrors*, *The 39 Steps*, *And Then There Were None*, *The Full Monty*, *The Best Little Whorehouse in Texas*, *Annie*, *Shrek The Musical*, *I'll Be Back Before Midnight!* and *Twist*. Rick would like to thank his lovely wife, Clare, for indulging (in Clare's words) his "need for attention." Most importantly, he'd like to thank the patrons and supporters of live theatre in the Coastal Bend.



BRENDA CASTLE (*Tech*) is helping backstage as part of the Technical Crew. This is her first play at PACT. She has been involved in the past two productions of the Boar's Head and Yule Log Festival in Corpus Christi as a Woods Lady. She has also performed in *Christmas Shoes* and various other church productions. Her alter ego is "Miss Bea Happy," an Augusta clown who enjoys entertaining young and old alike. As a Winter Texan from Idaho she enjoys the mild Texas winters and the great Southern hospitality! Thank you for coming and enjoy the show!



RAY DILLAHUNTY (*Set Design*) is retired from the oil and gas industry. He has been involved in many volunteer activities

in Port Aransas since becoming a full-time resident in 2017. He and his wife, Leslie, are avid birdwatchers and lead "Birding on the Boardwalk" every Wednesday morning for the Nature Preserve. Over the past several years, much of his volunteer work has been designing and constructing sets for PACT. Most notable works are his man-eating puppet, Audrey 2, for *Little Shop of Horrors* and sets for *Noises Off*.



KIMBERLY MASSEY (*Makeup Artist, Tech*) is excited to be the makeup artist for *The Play That Goes Wrong*.

She will also be backstage for this production. This is her second show at PACT. She was stage manager for her son's (Brayden Jake) directorial debut in *I'll Be Back Before Midnight!* "We love it here and always have so much fun! I want to thank God for this opportunity and new friendships that were created. I am so happy to share another theatre experience with my amazing son, Brayden. I want to thank my sweet boyfriend, Ryan, and my family for their continuous support during this show. Ken, you are an amazing director and I thank you for this fun opportunity! Break a leg, cast and crew! Enjoy the show!"



GLENDA McCORMICK (*Stage Manager*) has been a member of the PACT for more than ten years. She also serves as Vice President on the PACT Board of Directors. This will be Glenda's

WHO'S WHO ON THE PRODUCTION TEAM

sixteenth production at the PACT. Some productions she has participated in are: *Noises Off*, *And Then There Were None*, *The 39 Steps*, *Little Shop of Horrors*, *I Love You, You're Perfect, Now Change*, *Grumpy Old Men: The Musical*, *The Laramie Project*, *Mid-Life 2! #WhatDidIComeInHereFor?*, *Drinking Habits*, *Kitchen Witches* and *Twist*. This play presented the biggest challenge yet for her as stage manager, as well as the cast and crew. "But I think that we have risen to the challenge and have produced a winner! Working with this cast and crew has certainly been an adventure. One I have enjoyed being on. Sit back and enjoy your ride on the crazy train."



EMILY "EJ" REGIER

[Tech] has been doing theatre for more than 57 years, and it is her love. "Hello, my friends - I'm back - but this time I'm working on tech [backstage]. Don't worry I'll be back on the stage, I hope. I am happy to be working with this talented cast and crew. I guarantee you will enjoy this play. Sit back and have a blast!"



JUSTIN REVELS [Tech]

has been involved with PACT for several years and enjoys working behind the scenes. Justin was the puppet operator for the Audrey II puppet in *Little Shop of Horrors*. He is excited to be a part of *The Play That Goes Wrong*, helping create the chaos that makes the play so much fun.



GRACYN SCHOLZ [Stage Combat Choreographer]

is an Acting/Directing major at Texas A&M-Corpus Christi. She has been performing for more than a decade in the Houston and Corpus Christi areas. She is also certified in Unarmed Stage Combat, Dagger and Rapier and Knife stage fighting. This will be her fifth show here at PACT. She has previously been seen at PACT as Ginny in *5 Lesbians Eating a Quiche* and as Camper Nyssa, the Oracle and DJ Cerberus in *The Lightning Thief: The Perry Jackson Musical*. Gracyn was also the stage combat choreographer for *The Lightning Thief: The Perry Jackson Musical*. She is very excited to be back at PACT to choreograph more fun and exciting fights. "This show is full of 'Uh Oh's' and knockouts - so it will be a fun ride."



MEAGHAN SETTERBO

[Tech] is thrilled to make her PACT debut! She recently appeared as multiple characters in Rockport Little Theatre's production of *One Christmas Eve at Evergreen Mall*, her first show in Rockport. Other credits include Lydia Bennet in *Miss Bennet: Christmas at Pemberley* [Gaslight-Baker Theater], Der Elefant in *Einstein's Wrong About Everything* [Overtime Theater], and Feste in *Twelfth Night* [Overtime Theater]. Meaghan graduated from Texas State University with a B.A. in Communication Studies, Theater Minor. While there, she served

WHO'S WHO ON THE PRODUCTION TEAM

as Historian of Texas State's award-winning dance team, Grupo Folklorico Ocotochtli. Offstage, Meaghan works as the Executive Assistant for the Aransas County Road & Bridge Department and enjoys spending time with her dog, Edna, and cat, Walter Melon.



SAVANNAH STIRLING

[Light and Sound Director] has been at PACT for going on 15 years! She is usually

seen in the tech booth, but will dabble in directing and acting. She graduated five years ago from Texas A&M-Corpus Christi with a degree in technical theatre with a focus in carpentry and electrics. She taught technical theatre for five years but has taken some time off from teaching to spend more time with her two-year-old son, Matthew.



AJ WARRINGTON [Tech]

is joining the tech crew at PACT for the first time. She couldn't be more thrilled about

the chance to be a part of this theater

family, and to work on another show with her partner, Jordan.



KENNETH YARBROUGH

[Director] has been with the PACT for 20 years. During that time he has appeared in several

productions, including *Greater Tuna*, *The Full Monty*, and most recently in *Mid-Life 2! #WhatDidIComeInHereFor?* In addition to acting, Ken has directed more than 25 productions here at PACT. He is thrilled to have the opportunity to direct this hilarious comedy and thanks everyone from the cast, crew and production team who have worked so hard to make this production happen. This show is dedicated to Elowyn: "No matter how bad your day is, there is always someone whose day is worse. So keep laughing."



COQUINA DANCE JEWELRY



Handcrafted in Port Aransas | FREE Delivery in Port Aransas
coquinadance.com | Use Code PACT20 for 20% off

CORNLEY UNIVERSITY DRAMA SOCIETY

Cornley halls of residence and commutes daily from his parents' house. He hopes the Society will give him the chance to meet like-minded people. Dennis' only stage credit dates back to 1995 when he appeared in his primary school nativity.



ANNIE TWILLOIL (*Stage Manager*) Touring debut! The unsung hero of the Society, Annie has designed, built, painted, stage managed and costumed every single Society show in the last three years. Her hard work and dogged determination behind-the-scenes lies behind so much of the Society's success. After *The Murder at Haversham*

Manor, Annie will begin an internship at the Oregon Shakespeare Festival.



TREVOR WATSON (*Lighting & Sound Operator*) Touring debut! Trevor is only participating in *The Murder at Haversham Manor* to earn much needed extra credit for his electronics module in order to pass his engineering course at Cornley University. Once he has passed the course, he will not continue to work with the Drama Society. Trevor credits his success to his sunny disposition and his positive outlook on life.

CORNLEY UNIVERSITY DRAMA SOCIETY

Emote, another local theater company, in *A Midsummer Night's Stamina*, which featured a cast of 14 pedaling exercise bikes for the full two-hour performance.



SANDRA WILKINSON (*Florence Colleymoore*) Touring debut! This is Sandra's eleventh season with the Cornley University Drama Society, during which she has proudly performed roles such as Snow White in *Snow White and The Tall Broad Gentlemen*, Virginia Woolf in *Who's Afraid of Virginia Woolf?* and The Cow in *Jack and The Bean*. Sandra has been performing from a very young age, since her mother appeared in *A Winter's Tale* pregnant.



MAX BENNETT (*Cecil Haversham*) Touring debut! Max is in his first year at Cornley University where he is studying human geography and crime. He is an avid fan of films, and his favorite is *The Legend of Bagger Vance*, which he's seen 27 times. This is Max's first production with the Drama Society, and he is very glad to have donated a large portion of his recent inheritance to help the show reach Broadway.



DENNIS TYDE (*Perkins*) Touring debut! After failing the tryouts for the football, cricket, volleyball and basketball teams, Dennis decided to join the Drama Society. Dennis does not live in the



CHRIS BEAN (*Inspector Carter & Director*) Touring debut! Chris is the newly elected head of the Drama Society. For tonight's show, he served as the voice coach, dialect coach, fight choreographer, casting director and costume designer. He also plays the lead role and, of course, directs. The Society would like to thank Chris for his remarkable passion and efforts. Credits within the University: Hamlet in *Hamlet*, Macbeth in *Macbeth* and Othello in *Othello*.



ROBERT GROVE (*Thomas Colleymoore*) Touring debut! A member of the Cornley Drama Society for three years, Robert uses the Stanislavsky method. Credits include: Lame Horse in *Black Beauty*, Victorian Policeman in *Madame Tussaud's Chamber of Horror - Live!*, Dopey in *Snow White and The Tall Broad Gentlemen* and Augustus Gloop in *Charlie & The Chocolate Factory*. Robert's next performance will be as Godot in a newly self-written sequel to Beckett's classic.



JONATHAN HARRIS (*Charles Haversham*) Touring debut! Jonathan works as a model and is therefore excited to learn transferable skills by appearing in *The Murder at Haversham Manor*. He is no stranger to acting and appeared in *Casualty* when he was just five years old. Jonathan also performed with

*Robert Grove's
School Of
Perfect Acting*

Learn from an Expert!

Certified in Stanislavsky Method



A LETTER FROM THE PRESIDENT

Hello and welcome to *The Murder at Haversham Manor*.

We are thrilled that the Cornley University Drama Society is now performing at the Lyceum Theatre on Broadway. We can only apologize to those involved in the would-be Broadway production of *Equus*, which due to a clerical error, is now being performed in the Cornley University Gymnasium. We hope there are no hard feelings and we've left the vaulting horse out for you.

The question everyone at Cornley has been asking is: are we ready for Broadway? The answer is, "Yes."

The cast and I rehearsed for weeks using only the best acting teachings to inspire us. We read that Sanford Meisner once said, "Acting is behaving truthfully," so we immediately changed all the names in the play to our own names and cut the murder, the manor house setting and any other element that we hadn't personally experienced. We then found the piece rather flat, and it only ran at 17 minutes. So we went back to the Meisner book and we realized the full quote was in fact: "Acting is behaving truthfully ... under imaginary circumstances," so we reinstated the cuts and we were then quickly back on track.

We found the teachings of Michael Chekhov less confusing. He says, "An actor has to burn inside with an outer ease." So that evening it was vindaloos all around at the Sunam Balti House on Cornley High Street. However, try as we did to not react to our burning insides, it was certainly noticeable that we were all in significant discomfort, which just goes to show how tough acting can be. At the end of the evening, Dennis was actually sick in the restaurant bathrooms. We always knew he was one of the weaker actors.

All this hard work and preparation has left us with an ensemble piece that has achieved such critical acclaim as "VERY INTERESTING" from Mr. Harwood, esteemed head of Design Technology at Cornley University, and "RATHER UNSETTLING" from real-life police chief Mr. Greaves of the Cornley Volunteer Police Force. I'm sure that with a full audience, the piece will truly bring down the house.

CHRIS BEAN

President of the Cornley University Drama Society &
Director of *The Murder at Haversham Manor*



THE CORNLEY DRAMA SOCIETY PRESENTS



THE MURDER AT HAVERSHAM MANOR

CAST

INSPECTOR CARTER — **CHRIS BEAN**
CHARLES HAVERSHAM — **JONATHAN HARRIS**
MARY COLLEYMOORE — **ROBERT GROVE**
PERKINS — **DENNIS TYDE**
FLORENCE COLLEYMOORE — **SANDRA WILKINSON**
CECIL HAVERSHAM, ARTHUR THE GARDENER — **MAX BENNETT**

CREATIVE

WRITER — **SUSIE H.K. BRIDESWELL**
PRODUCER — **WAYNE BLEXT**
DIRECTOR — **CHRIS BEAN**
DESIGNER — **CHRIS BEAN**
COSTUME DESIGNER — **CHRIS BEAN**
PROP MAKER — **CHRIS BEAN**
BOX OFFICE MANAGER — **CHRIS BEAN**
PRESS & PR — **CHRIS BEAN**
DRAMATURGY — **CHRIS BEAN**
VOICE COACH — **CHRIS BEAN**
DIALECT COACH — **CHRIS BEAN**
FIGHT CHOREOGRAPHER — **CHRIS BEAN**
REHEARSAL ROLE 'MR. FITZROY' — **CHRIS BEAN**
STAGE MANAGER — **ANNIE TWILLOIL**
LIGHTING & SOUND OPERATOR — **TREVOR WATSON**

PLAYBILL

THE CORNLEY DRAMA SOCIETY

THE MURDER AT HAVERSHAM MANOR



February 1 - 25, 2024